

Configuration guide for SemIndia (DNA-A201SM) 2 port ADSL Router

- 1) Open the internet explorer and type <http://192.168.1.1/> .
Type admin as username and password. Then the following window will appear.

DSL Router - Mozilla Firefox

File Edit View History Bookmarks Tools Help

http://192.168.1.1/main.html

Getting Started Latest Headlines

MTNL

Device Info
Advanced Setup
Diagnostics
Management

Device Info

Board ID:	96338L-2M-8M
Software Version:	3.08.02.SM.01.03_0927_081607
Bootloader (CFE) Version:	1.0.37-10.1
Firmware Version:	DNA-A201BE-0001.01
Hardware Version:	DNA-A201BE 2.2
Model Name:	DNA-A201SM

This information reflects the current status of your DSL connection.

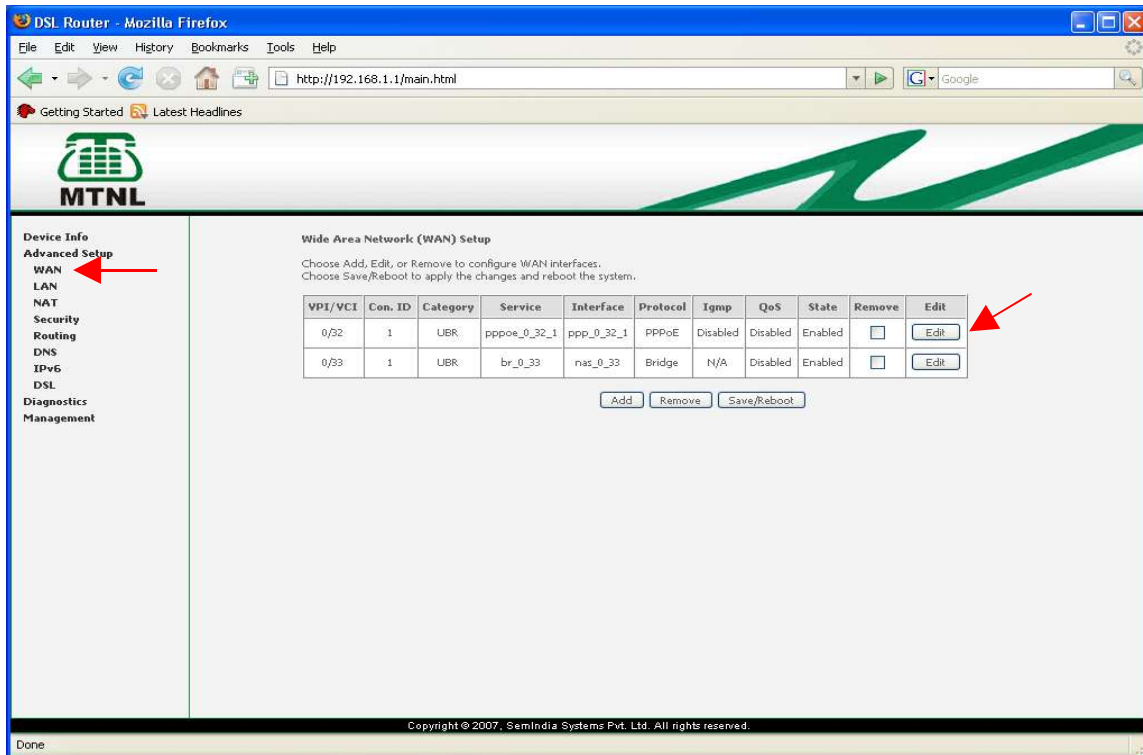
Line Rate - Upstream (Kbps):	1021
Line Rate - Downstream (Kbps):	2047
LAN IP Address:	192.168.1.1
Default Gateway:	
Primary DNS Server:	192.168.1.1
Secondary DNS Server:	192.168.1.1

Copyright © 2007, SemIndia Systems Pvt. Ltd. All rights reserved.

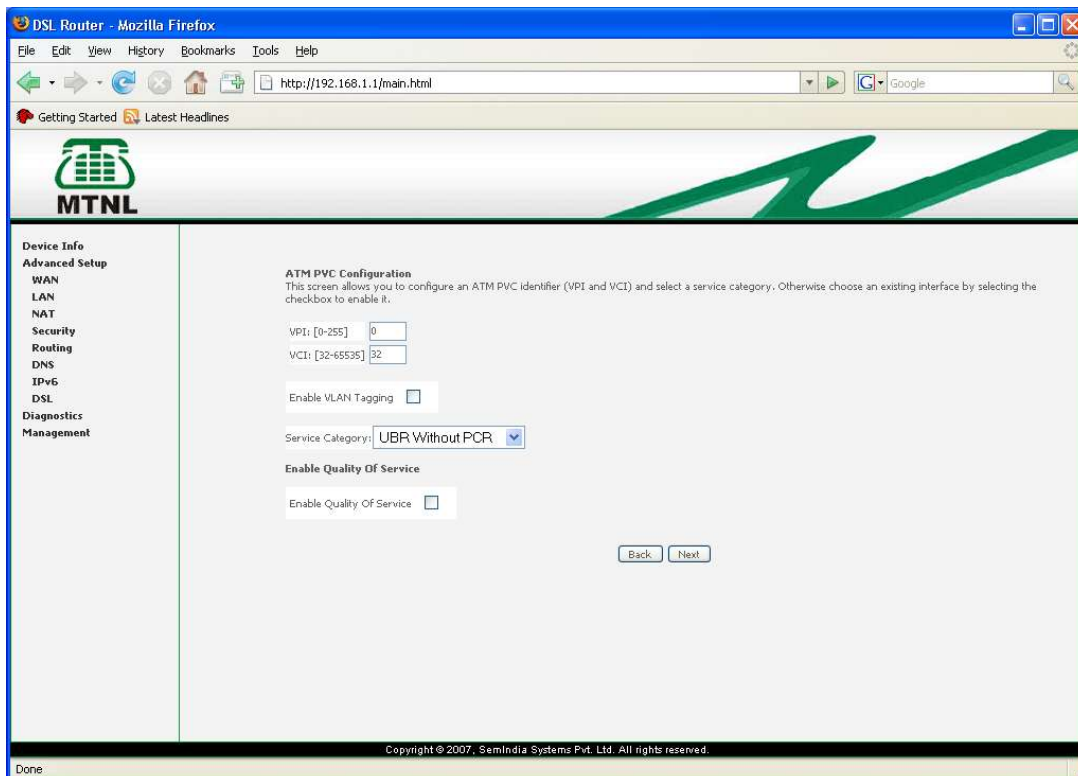
Done

start DSL Router... UT-Star New Open... 1) Open th... Untitled1 - ... 11:14 AM

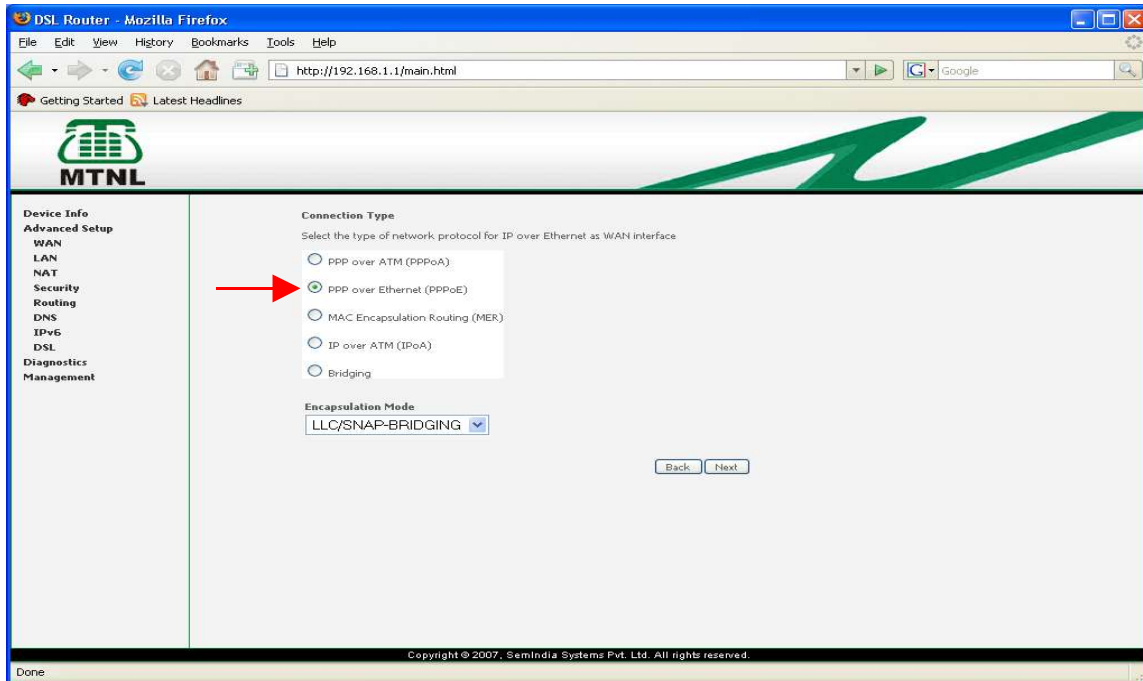
- 2) Click on **Advanced Setup** --> **WAN**
Click on **Edit** corresponding to VPI/VCI= 0/32 as shown below



3) put VPI – 0 and VCI – 32 click Next

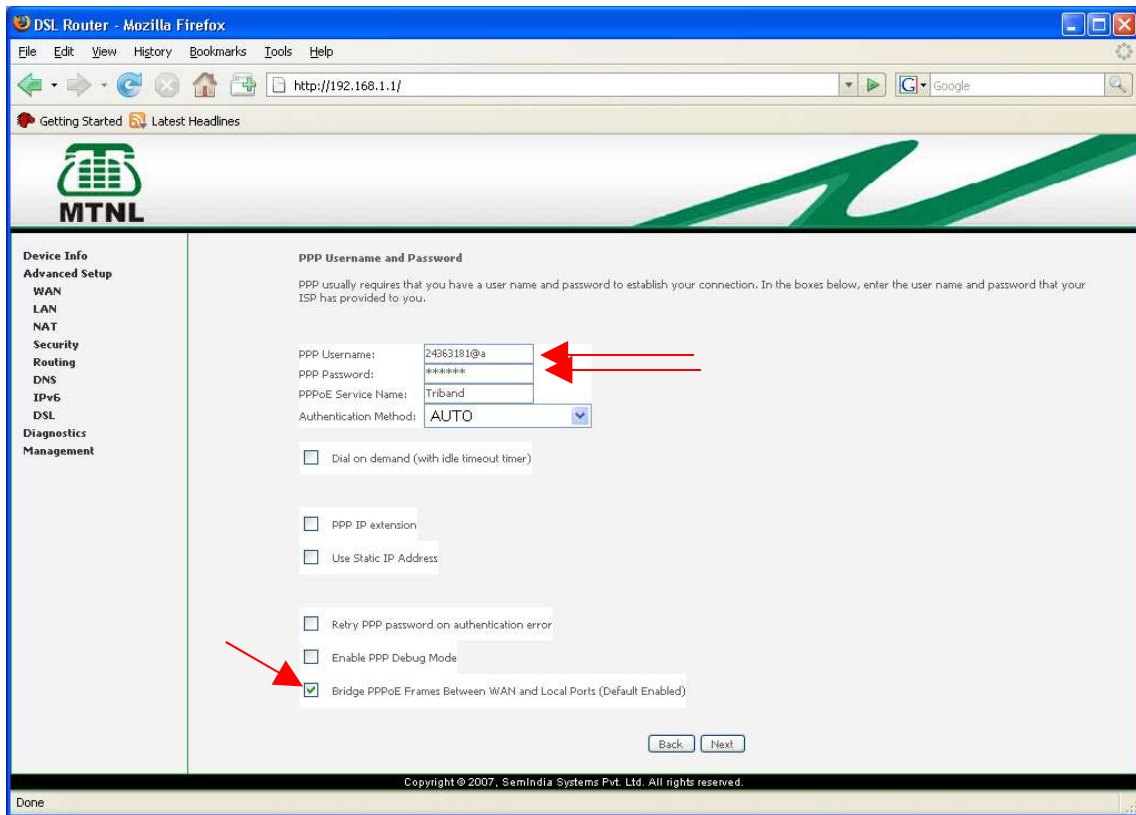


4) Select **PPP Over Ethernet (PPPoE)** and click **Next**

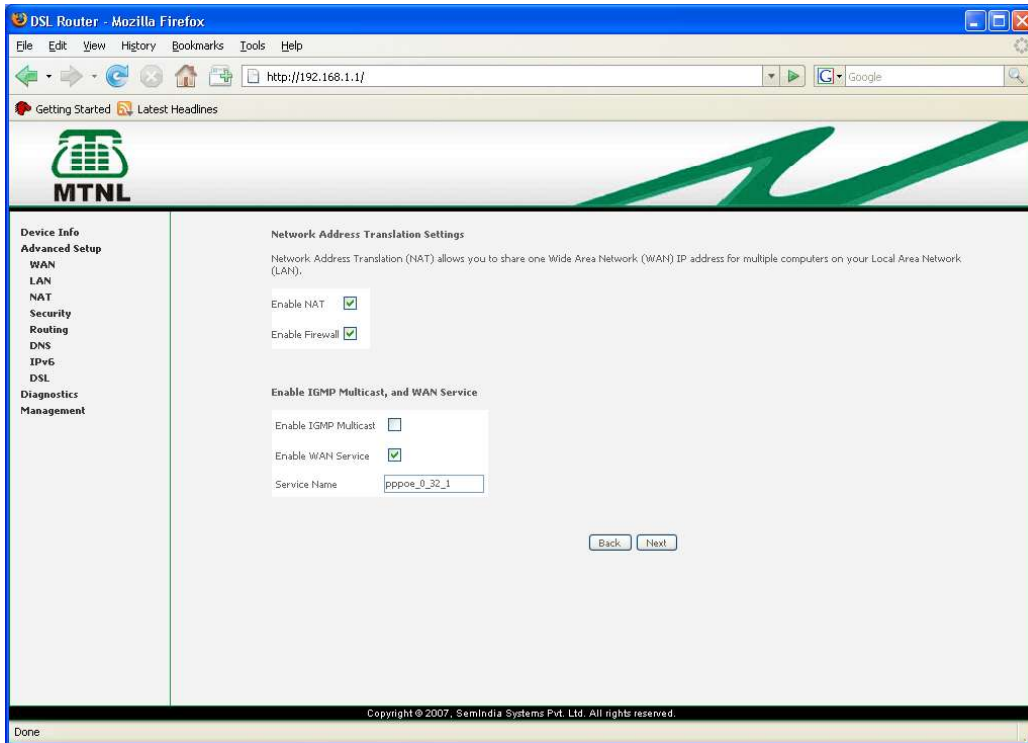


5) Type the Triband username and password
(Username : TelephoneNo@a _if customer is connected to Alcatel DSLAM
TelephoneNo if customer is connected to Ericsson DSLAM
Password : Subscriber No (CA No)
Also click '**Bridge PPPoE Frames Between WAN and Local Ports (Default Enabled)** '

Click **Next**

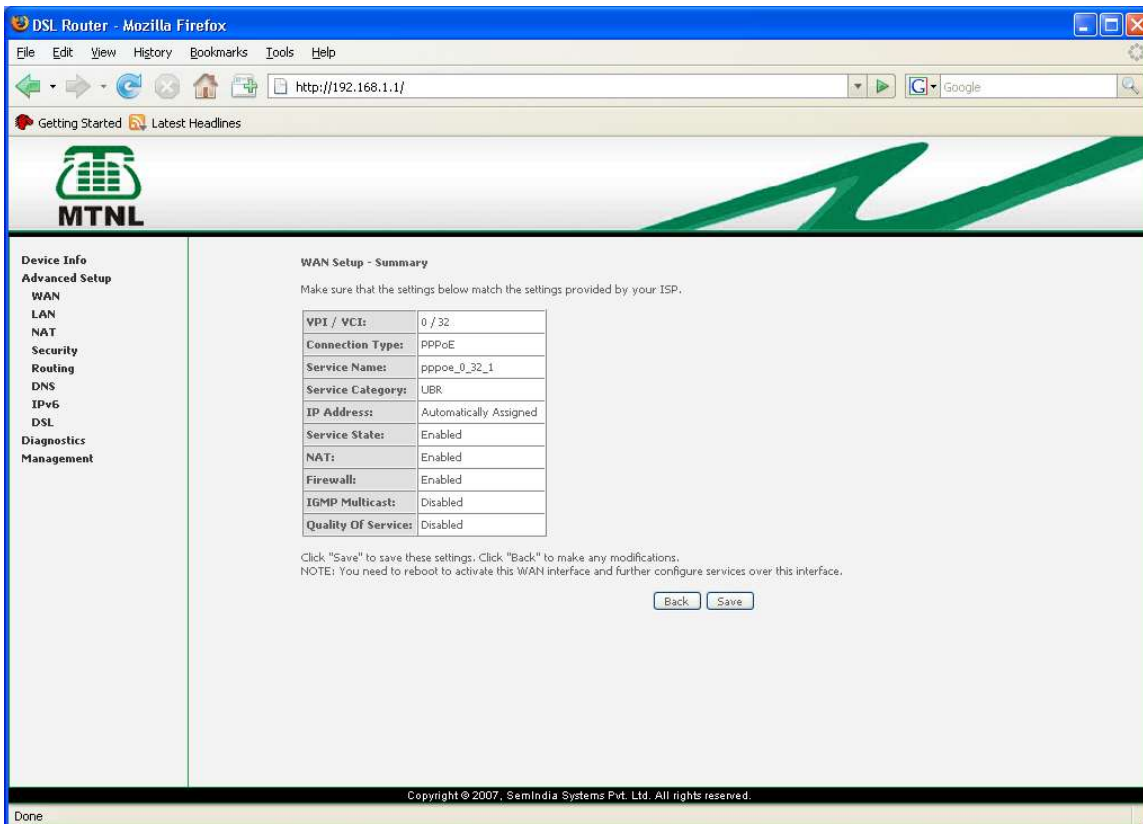


6) Click **NAT** and **FIREWALL** Enabled Also click **Enable WAN Service**



Click Next

7) Click Save



8) Click Save / Reboot

DSL Router - Mozilla Firefox

File Edit View History Bookmarks Tools Help

http://192.168.1.1/

Getting Started Latest Headlines

MTNL

Device Info
Advanced Setup
WAN
LAN
NAT
Security
Routing
DNS
IPv6
DSL
Diagnostics
Management

Wide Area Network (WAN) Setup

Choose Add, Edit, or Remove to configure WAN interfaces.
Choose Save/Reboot to apply the changes and reboot the system.

VPI/VCI	Con. ID	Category	Service	Interface	Protocol	Igmp	QoS	State	Remove	Edit
0/32	1	UBR	pppoe_0_32_1	ppp_0_32_1	PPPoE	Disabled	Disabled	Enabled	<input type="checkbox"/>	Edit
0/33	1	UBR	br_0_33	nas_0_33	Bridge	N/A	Disabled	Enabled	<input type="checkbox"/>	Edit

Add Remove Save/Reboot

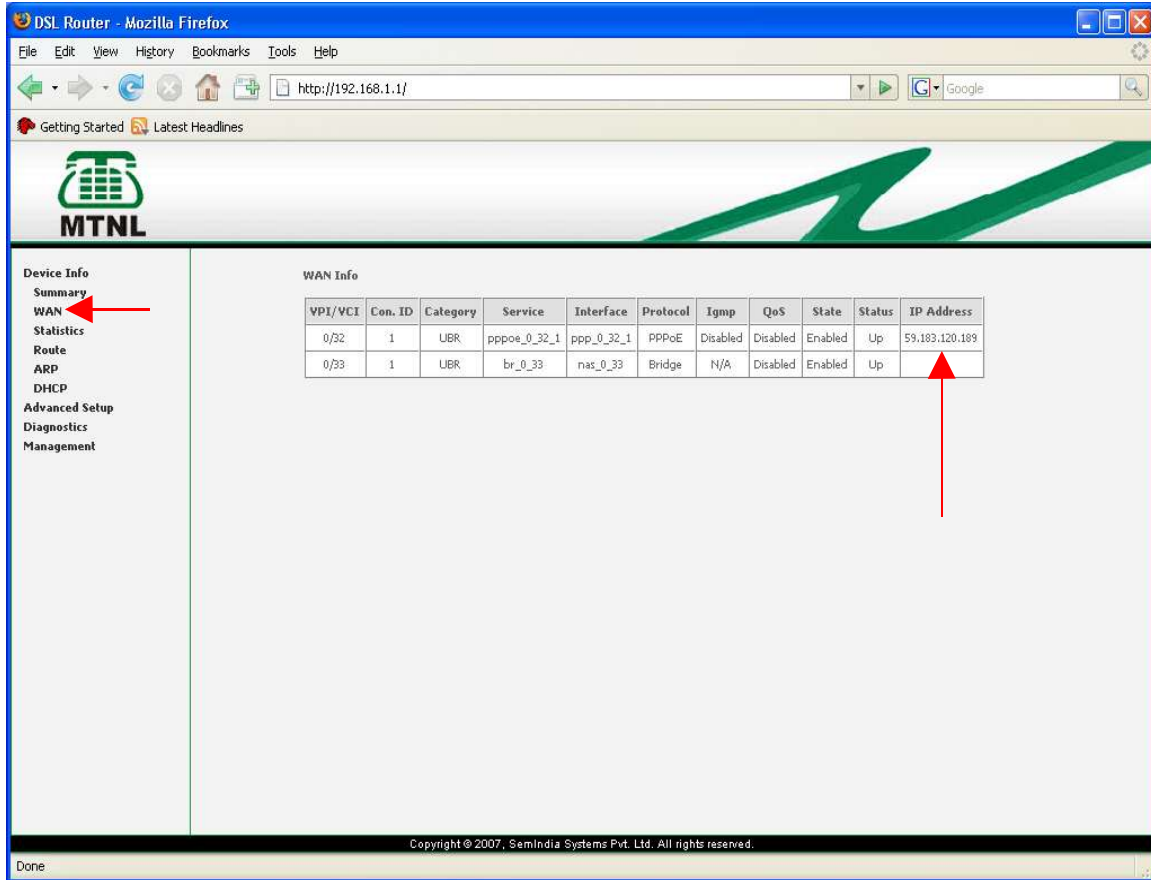
Copyright © 2007, SemIndia Systems Pvt. Ltd. All rights reserved.

Done

Now the configuration is over...

Checking whether Router connected to Internet or not

Open the router homepage, <http://192.168.1.1/> put admin as username and password.
Goto **Device Info** --> **WAN** IP address field in the row corresponds to VPI/VCI=0/32 shows the connectivity of router to Internet.



DSL Router - Mozilla Firefox

File Edit View History Bookmarks Tools Help

http://192.168.1.1/

Getting Started Latest Headlines

MTNL

Device Info
Summary
WAN
Statistics
Route
ARP
DHCP
Advanced Setup
Diagnostics
Management

WAN Info

VPI/VCI	Con. ID	Category	Service	Interface	Protocol	Igmp	QoS	State	Status	IP Address
0/32	1	UBR	pppoe_0_32_1	ppp_0_32_1	PPPoE	Disabled	Disabled	Enabled	Up	59.183.120.189
0/33	1	UBR	br_0_33	nas_0_33	Bridge	N/A	Disabled	Enabled	Up	

Copyright © 2007, SemIndia Systems Pvt. Ltd. All rights reserved.

Done